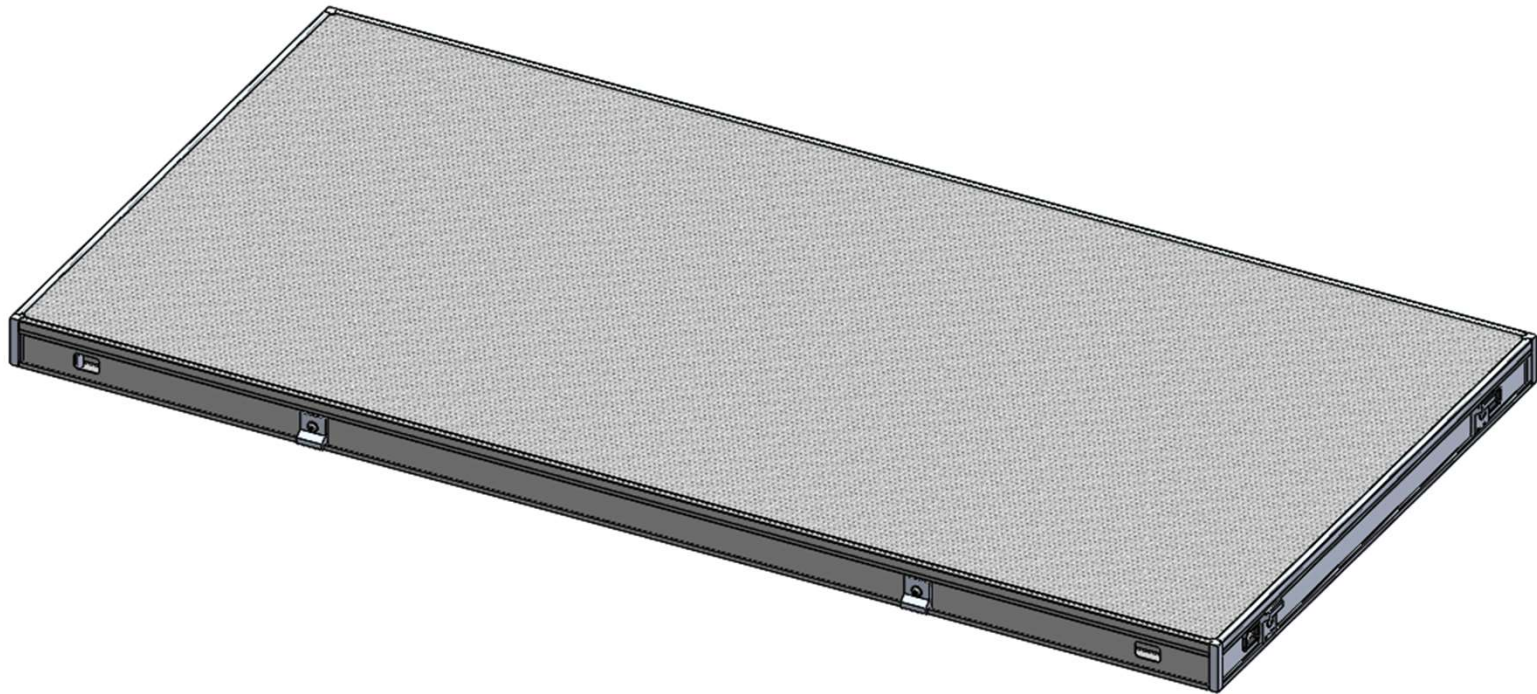


HOW TO REPLACE AS2100 DECK SURFACE



5/11/2021

How to Replace AS2100 Deck Surface



PLACE DECK ON ITS TOP



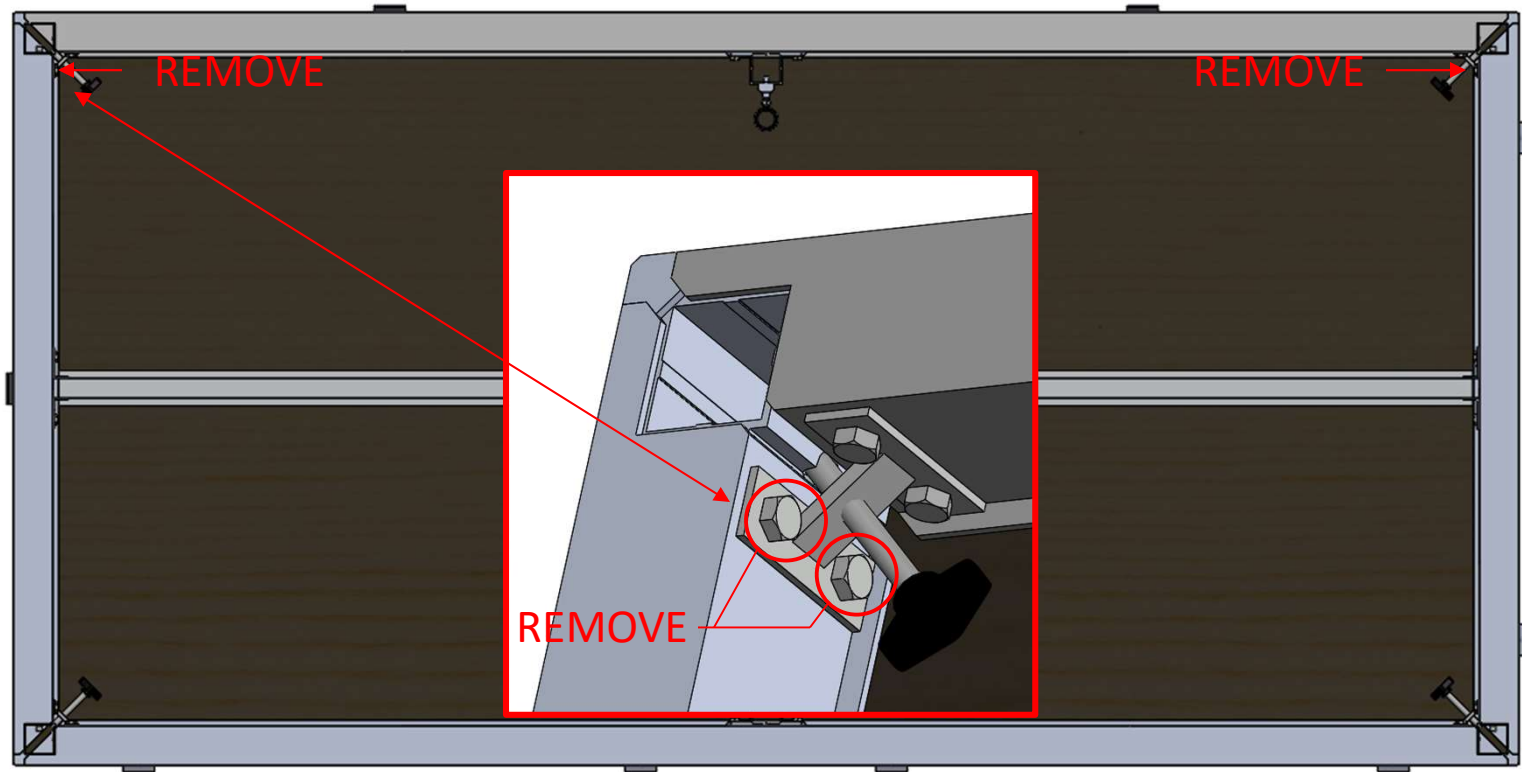
5/11/2021

How to Replace AS2100 Deck Surface

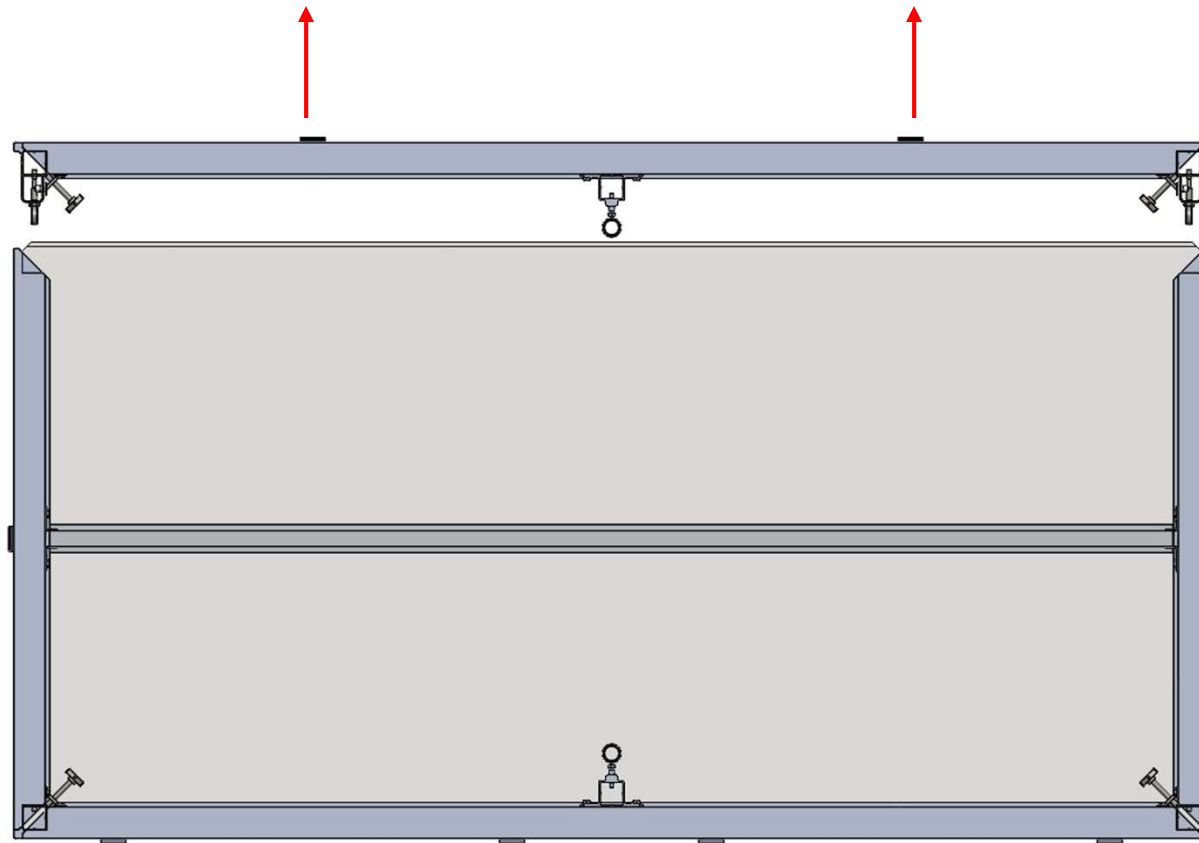
2



REMOVE (2) SCREWS ALONG 4' SIDES



PULL OFF SIDE RAIL ASSEMBLY



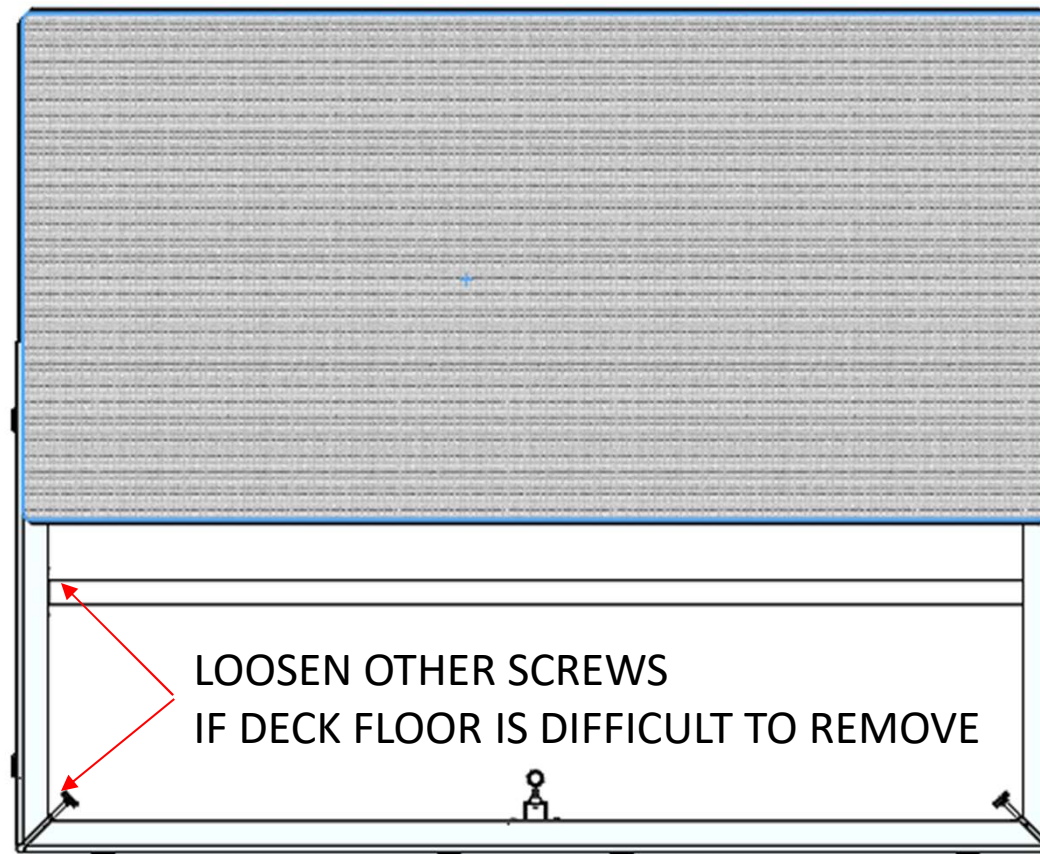
5/11/2021

How to Replace AS2100 Deck Surface

4



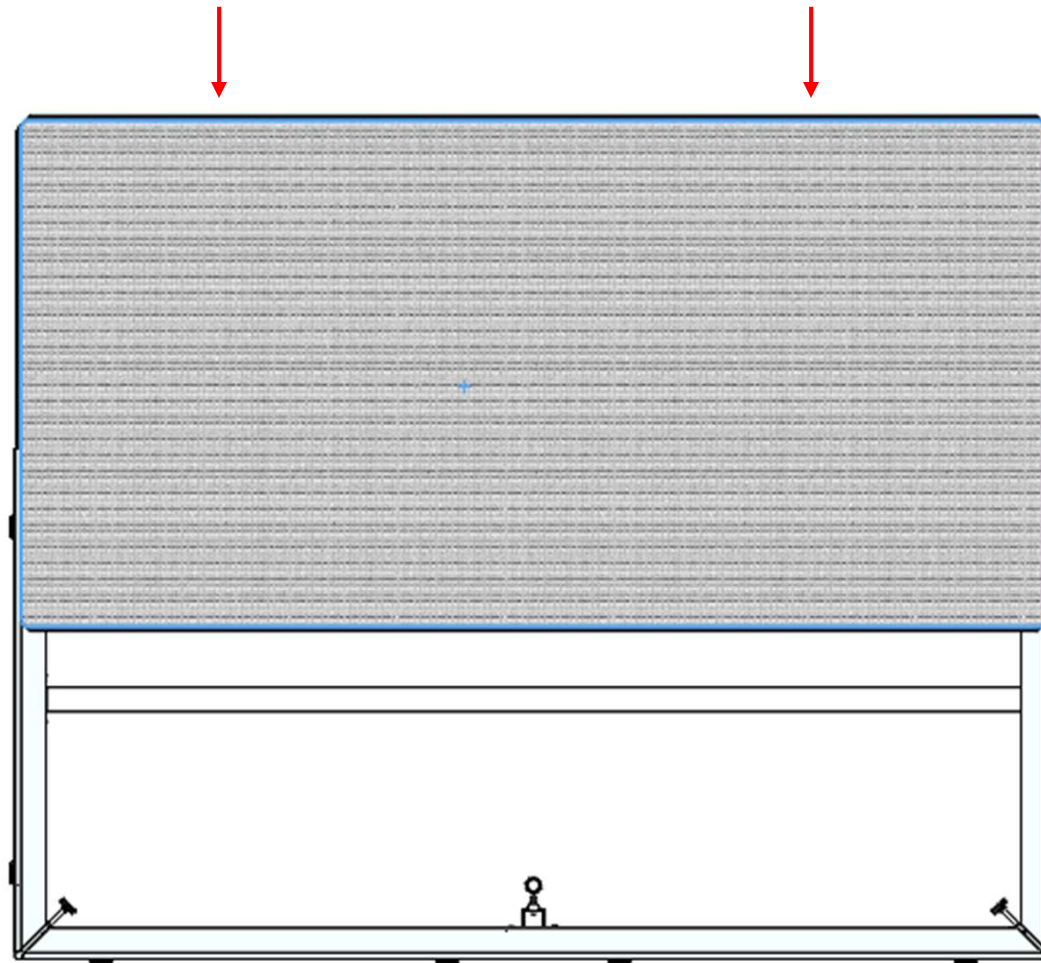
TURN OVER DECK SLIDE OUT DECK FLOOR



LOOSEN OTHER SCREWS
IF DECK FLOOR IS DIFFICULT TO REMOVE



SLIDE IN NEW DECK FLOOR



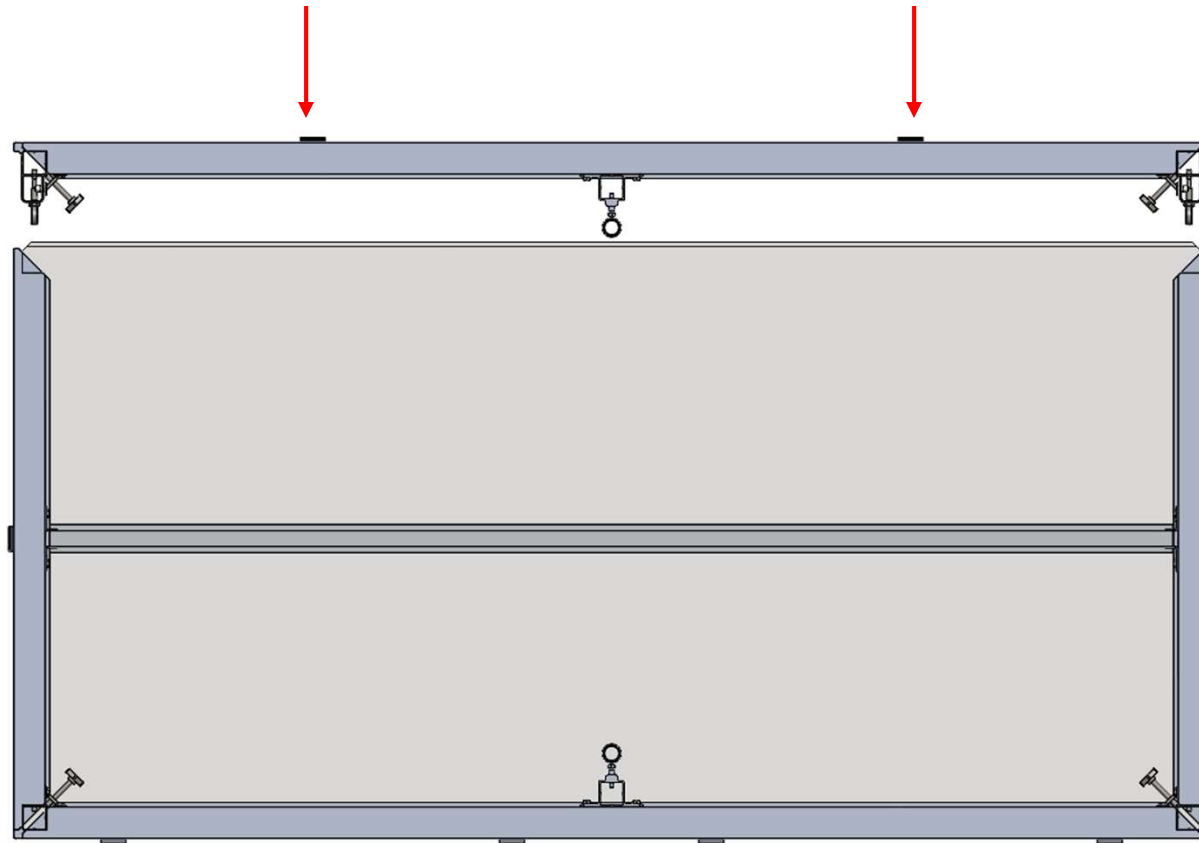
5/11/2021

How to Replace AS2100 Deck Surface

6



TURN DECK OVER PUSH ON SIDE RAIL ASSEMBLY



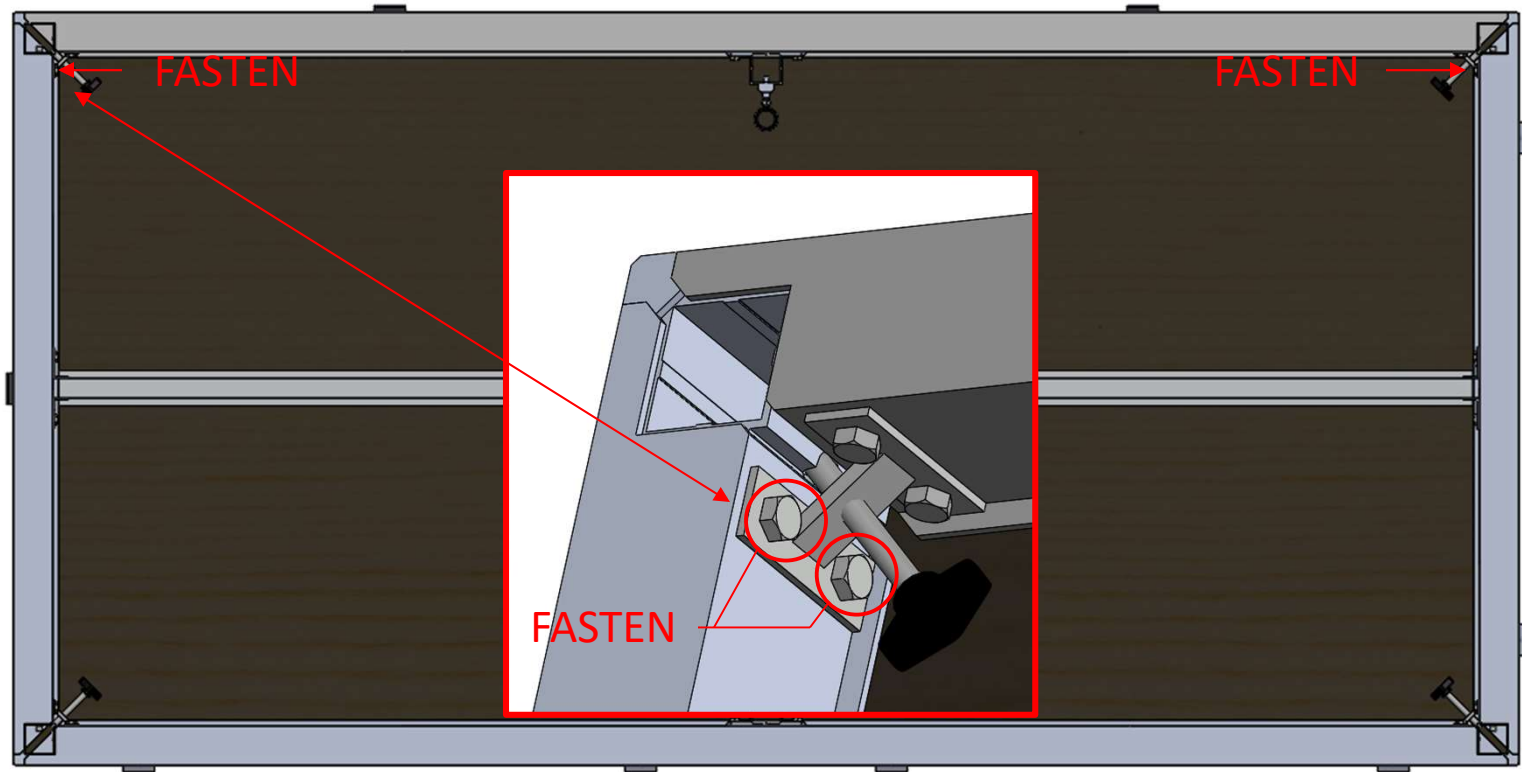
5/11/2021

How to Replace AS2100 Deck Surface

7



FASTEN SIDE RAIL ASSEMBLY WITH SCREWS



TIGHTEN ALL SCREWS BEFORE RE-USE.
DO NOT OVER TIGHTEN.

5/11/2021

How to Replace AS2100 Deck Surface



CARE FOR DECK SURFACE

Deck surface is a high-density polyethylene (HDPE) overlay, laminated to plywood.

The surface is chemical, moisture and mold resistant
that can be spray cleaned with mild solvents.

The quad-ripple surface has excellent wearing capabilities and provides a low-skid surface.
Exposure to humid or wet conditions may cause moisture damage.

You should avoid exposure to extremely high or extremely low moisture conditions.

Standing water on surface of panels may cause color distortion.

Color distortion may also occur when panels are exposed to excessive heat source
that exceeds 130°F (54°C).

Optimum storage conditions are 60°F (16°C) to 75°F (24°C) and
35% to 55% relative humidity.

If you should need to replace your deck surface, the part numbers are:

0105-10-7 Plywood Quad-Ripple - 48in x 96in- Black (4' x 8' deck)

0105-12-7 Plywood Quad-Ripple - 48in x 48in- Black (4' x 4' deck)

